

NIBCO®

AHEAD OF THE FLOW™



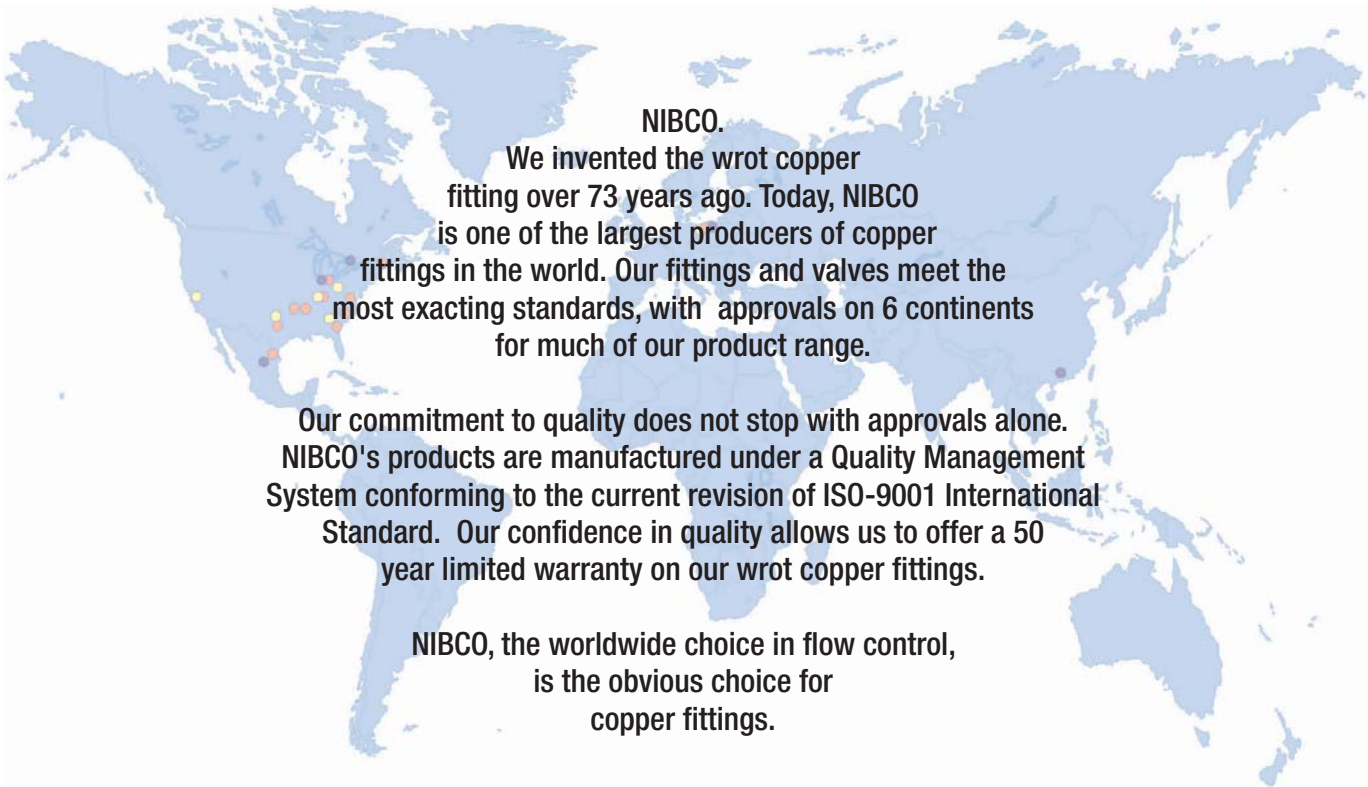
Metric Copper Fittings



Warranty covers PVC-C and PVC-U fittings, pipe and wrot copper fittings.

NIBCO®

AHEAD OF THE FLOW™



NIBCO.

We invented the wrot copper fitting over 73 years ago. Today, NIBCO is one of the largest producers of copper fittings in the world. Our fittings and valves meet the most exacting standards, with approvals on 6 continents for much of our product range.

Our commitment to quality does not stop with approvals alone. NIBCO's products are manufactured under a Quality Management System conforming to the current revision of ISO-9001 International Standard. Our confidence in quality allows us to offer a 50 year limited warranty on our wrot copper fittings.

NIBCO, the worldwide choice in flow control, is the obvious choice for copper fittings.



PZH



COBR TI



Metric Copper Pressure Fittings

5001A 90° Fitting Elbow – Long Radius Ftg x C



FIGURE NO.	SIZE	QUANTITY BAG/CARTON
5001-008	8	50 (500)
5001-010	10	50 (500)
5001-012	12	50 (500)
5001-014	14	25 (250)
5001-015	15	25 (250)
5001-016	16	25 (250)
5001-018	18	25 (250)
5001-022	22	25 (250)
5001-028	28	10 (100)
5001-035	35	10 (100)
5001-042	42	10 (80)
5001-054	54	1 (10)
5001-067	67	1 (13)
5001-076	76	1 (8)
5001-108	108	1 (2)

5002A 90° Elbow Long Radius C x C



FIGURE NO.	SIZE	QUANTITY BAG/CARTON
5002-008	8	50 (500)
5002-010	10	50 (500)
5002-012	12	50 (500)
5002-014	14	25 (250)
5002-015	15	25 (250)
5002-016	16	25 (250)
5002-018	18	25 (250)
5002-022	22	25 (250)

continues

5002A 90° Elbow Long Radius C x C



FIGURE NO.	SIZE	QUANTITY BAG/CARTON
5002-028	28	10 (100)
5002-035	35	10 (100)
5002-042	42	10 (80)
5002-054	54	1 (10)
5002-067	67	1 (12)
5002-076	76	1 (10)
5002-108	108	1 (2)

5002G Tap Connector C x F



FIGURE NO.	SIZE	QUANTITY BAG/CARTON
5002-015-1/2	15 x 1/2	250
5002-015-3/4	15 x 3/4	250
5002-018-1/2	18 x 1/2	250
5002-018-3/4	18 x 3/4	250
5002-022-3/4	22 x 3/4	250

5040 45° Fitting Elbow Ftg x C



FIGURE NO.	SIZE	QUANTITY BAG/CARTON
5040-008	8	50 (500)
5040-010	10	50 (500)
5040-012	12	50 (500)
5040-014	14	25 (250)
5040-015	15	25 (250)
5040-016	16	25 (250)
5040-018	18	25 (250)
5040-022	22	25 (250)
5040-028	28	10 (100)
5040-035	35	10 (100)
5040-042	42	10 (80)
5040-054	54	1 (10)
5040-067	67	1 (15)
5040-076	76	1 (12)

5041 45° Elbow C x C



FIGURE NO.	SIZE	QUANTITY BAG/CARTON
5041-008	8	50 (500)
5041-010	10	50 (500)
5041-012	12	50 (500)
5041-014	14	25 (250)
5041-015	15	25 (250)
5041-016	16	25 (250)
5041-018	18	25 (250)
5041-022	22	25 (250)
5041-028	28	10 (100)
5041-035	35	10 (100)
5041-042	42	10 (80)
5041-054	54	1 (10)
5041-067	67	1 (10)
5041-076	76	1 (10)
5041-086	86	1 (10)
5041-108	108	1 (10)

Metric Copper Pressure Fittings

5085 Cross-Over C x C



FIGURE NO.	SIZE	QUANTITY BAG/CARTON
5085-012	12	50 (400)
5085-015	15	10 (270)
5085-018	18	10 (170)
5085-022	22	10 (130)

5086 Partial Cross-Over C x C



FIGURE NO.	SIZE	QUANTITY BAG/CARTON
5086-012	12	50 (500)
5086-015	15	10 (350)
5086-018	18	10 (250)
5086-022	22	10 (110)

5090 90° Elbow Short Radius C x C



FIGURE NO.	SIZE	QUANTITY BAG/CARTON
5090-008	8	50 (500)
5090-010	10	50 (500)
5090-012	12	50 (500)
5090-014	14	25 (250)
5090-015	15	25 (250)
5090-016	16	25 (250)
5090-018	18	25 (250)
5090-022	22	10 (250)
5090-028	28	10 (100)
5090-035	35	10 (100)
5090-042	42	10 (80)
5090-054	54	1 (10)
5090-076	76	1 (10)
5090-108	108	1 (10)

5092 90° Fitting Elbow Short Radius Ftg x C



FIGURE NO.	SIZE	QUANTITY BAG/CARTON
5092-008	8	50 (500)
5092-010	10	50 (500)
5092-012	12	50 (500)
5092-014	14	25 (250)
5092-015	15	25 (250)
5092-016	16	25 (250)
5092-018	18	25 (250)
5092-022	22	10 (250)
5092-028	28	10 (100)
5092-035	35	10 (100)
5092-042	42	10 (80)
5092-054	54	1 (10)

5130/5130R Tee C x C x C



Note: Tee sizes are read Run x Branch x Run

FIGURE NO.	SIZE	QUANTITY BAG/CARTON
5130-008	8	50 (500)
5130-010	10	50 (500)
5130-012	12	50 (500)
5130-014	14	25 (250)
5130-015	15	25 (250)
5130-016	16	25 (250)
5130-018	18	25 (250)
5130-022	22	25 (250)
5130-028	28	10 (100)
5130-035	35	10 (100)
5130-042	42	10 (80)
5130-054	54	1 (10)
5130-067	67	1 (12)
5130-076	76	1 (8)
5130-108	108	1 (3)

continues

Metric Copper Pressure Fittings

5130/5130R

Tee C x C x C



Note: Tee sizes are read Run x Branch x Run

FIGURE NO.	SIZE	QUANTITY BAG/CARTON
5130-010-008-008	10 x 8 x 8	50 (500)
5130-010-008-010	10 x 8 x 10	50 (500)
5130-010-010-008	10 x 10 x 8	50 (500)
5130-010-010-010	10 x 10 x 10	50 (500)
5130-010-012-010	10 x 12 x 10	50 (500)
5130-010-015-010	10 x 15 x 10	50 (500)
5130-012-008-008	12 x 8 x 8	50 (500)
5130-012-008-010	12 x 8 x 10	50 (500)
5130-012-008-012	12 x 8 x 12	50 (500)
5130-012-010-008	12 x 10 x 8	50 (500)
5130-012-010-010	12 x 10 x 10	50 (500)
5130-012-010-012	12 x 10 x 12	50 (500)
5130-012-012-008	12 x 12 x 8	50 (500)
5130-012-012-010	12 x 12 x 10	50 (500)
5130-012-015-012	12 x 15 x 12	50 (500)
5130-012-018-012	12 x 18 x 12	50 (500)
5130-012-022-012	12 x 22 x 12	50 (500)
5130-014-012-012	14 x 12 x 12	25 (250)
5130-014-012-014	14 x 12 x 14	25 (250)
5130-015-008-010	15 x 8 x 10	25 (250)
5130-015-008-012	15 x 8 x 12	25 (250)
5130-015-008-015	15 x 8 x 15	25 (250)
5130-015-010-010	15 x 10 x 10	25 (250)
5130-015-010-012	15 x 10 x 12	25 (250)
5130-015-010-015	15 x 10 x 15	25 (250)
5130-015-012-010	15 x 12 x 10	25 (250)
5130-015-012-012	15 x 12 x 12	25 (250)
5130-015-012-015	15 x 12 x 15	25 (250)
5130-015-015-008	15 x 15 x 8	25 (250)
5130-015-015-010	15 x 15 x 10	25 (250)
5130-015-015-012	15 x 15 x 12	25 (250)
5130-015-018-012	15 x 18 x 12	25 (250)
5130-015-018-015	15 x 18 x 15	25 (250)
5130-015-022-015	15 x 22 x 15	25 (250)
5130-015-028-015	15 x 28 x 15	10 (100)
5130-016-012-016	16 x 12 x 16	25 (250)
5130-016-014-012	16 x 14 x 12	25 (250)
5130-016-014-014	16 x 14 x 14	25 (250)
5130-016-014-016	16 x 14 x 16	25 (250)
5130-018-010-010	18 x 10 x 10	25 (250)
5130-018-010-012	18 x 10 x 12	25 (250)
5130-018-010-015	18 x 10 x 15	25 (250)
5130-018-010-018	18 x 10 x 18	25 (250)

continues

5130/5130R

Tee C x C x C



Note: Tee sizes are read Run x Branch x Run

FIGURE NO.	SIZE	QUANTITY BAG/CARTON
5130-018-012-012	18 x 12 x 12	25 (250)
5130-018-012-015	18 x 12 x 15	25 (250)
5130-018-012-018	18 x 12 x 18	25 (250)
5130-018-015-012	18 x 15 x 12	25 (250)
5130-018-015-015	18 x 15 x 15	25 (250)
5130-018-015-018	18 x 15 x 18	25 (250)
5130-018-018-012	18 x 18 x 12	25 (250)
5130-018-018-015	18 x 18 x 15	25 (250)
5130-018-022-015	18 x 22 x 15	25 (250)
5130-018-022-018	18 x 22 x 18	25 (250)
5130-018-028-018	18 x 28 x 18	10 (100)
5130-022-010-022	22 x 10 x 22	25 (250)
5130-022-012-012	22 x 12 x 12	25 (250)
5130-022-012-015	22 x 12 x 15	25 (250)
5130-022-012-018	22 x 12 x 18	25 (250)
5130-022-012-022	22 x 12 x 22	25 (250)
5130-022-015-012	22 x 15 x 12	25 (250)
5130-022-015-015	22 x 15 x 15	25 (250)
5130-022-015-018	22 x 15 x 18	25 (250)
5130-022-015-022	22 x 15 x 22	25 (250)
5130-022-018-012	22 x 18 x 12	25 (250)
5130-022-018-015	22 x 18 x 15	25 (250)
5130-022-018-018	22 x 18 x 18	25 (250)
5130-022-018-022	22 x 18 x 22	25 (250)
5130-022-022-010	22 x 22 x 10	25 (250)
5130-022-022-012	22 x 22 x 12	25 (250)
5130-022-022-015	22 x 22 x 15	25 (250)
5130-022-022-018	22 x 22 x 18	25 (250)
5130-022-028-015	22 x 28 x 15	25 (100)
5130-022-028-022	22 x 28 x 22	10 (100)
5130-022-035-022	22 x 35 x 22	10 (100)
5130-028-010-028	28 x 10 x 28	10 (100)
5130-028-012-012	28 x 12 x 12	10 (100)
5130-028-012-015	28 x 12 x 15	10 (100)
5130-028-012-018	28 x 12 x 18	10 (100)
5130-028-012-022	28 x 12 x 22	10 (100)
5130-028-012-028	28 x 12 x 28	10 (100)
5130-028-015-012	28 x 15 x 12	10 (100)
5130-028-015-015	28 x 15 x 15	10 (100)
5130-028-015-018	28 x 15 x 18	10 (100)
5130-028-015-022	28 x 15 x 22	10 (100)
5130-028-015-028	28 x 15 x 28	10 (100)

continues

5130/5130R

Tee C x C x C



Note: Tee sizes are read Run x Branch x Run

FIGURE NO.	SIZE	QUANTITY BAG/CARTON
5130-028-018-012	28 x 18 x 12	10 (100)
5130-028-018-015	28 x 18 x 15	10 (100)
5130-028-018-018	28 x 18 x 18	10 (100)
5130-028-018-022	28 x 18 x 22	10 (100)
5130-028-018-028	28 x 18 x 28	10 (100)
5130-028-022-012	28 x 22 x 12	10 (100)
5130-028-022-015	28 x 22 x 15	10 (100)
5130-028-022-018	28 x 22 x 18	10 (100)
5130-028-022-022	28 x 22 x 22	10 (100)
5130-028-022-028	28 x 22 x 28	10 (100)
5130-028-028-012	28 x 28 x 12	10 (100)
5130-028-028-015	28 x 28 x 15	10 (100)
5130-028-028-018	28 x 28 x 18	10 (100)
5130-028-028-022	28 x 28 x 22	10 (100)
5130-028-028-028	28 x 28 x 28	10 (100)
5130-028-035-022	28 x 35 x 22	10 (100)
5130-028-035-028	28 x 35 x 28	10 (100)
5130-028-042-028	28 x 42 x 28	10 (100)
5130-035-012-035	35 x 12 x 35	10 (100)
5130-035-015-022	35 x 15 x 22	10 (100)
5130-035-015-028	35 x 15 x 28	10 (100)
5130-035-015-035	35 x 15 x 35	10 (100)
5130-035-018-022	35 x 18 x 22	10 (100)
5130-035-018-028	35 x 18 x 28	10 (100)
5130-035-018-035	35 x 18 x 35	10 (100)
5130-035-022-015	35 x 22 x 15	10 (100)
5130-035-022-018	35 x 22 x 18	10 (100)
5130-035-022-022	35 x 22 x 22	10 (100)
5130-035-022-028	35 x 22 x 28	10 (100)
5130-035-022-035	35 x 22 x 35	10 (100)
5130-035-028-015	35 x 28 x 15	10 (100)
5130-035-028-018	35 x 28 x 18	10 (100)
5130-035-028-022	35 x 28 x 22	10 (100)
5130-035-028-028	35 x 28 x 28	10 (100)
5130-035-028-035	35 x 28 x 35	10 (100)
5130-035-035-015	35 x 35 x 15	10 (100)
5130-035-035-018	35 x 35 x 18	10 (100)
5130-035-035-022	35 x 35 x 22	10 (100)
5130-035-035-028	35 x 35 x 28	10 (100)
5130-035-042-035	35 x 42 x 35	10 (100)
5130-042-015-042	42 x 15 x 42	10 (80)
5130-042-018-042	42 x 18 x 42	10 (80)
5130-042-022-035	42 x 22 x 35	10 (80)

continues

Metric Copper Pressure Fittings

5130/5130R Tee C x C x C



Note: Tee sizes are read
Run x Branch x Run

FIGURE NO.	SIZE	QUANTITY BAG/CARTON
5130-042-022-042	42 x 22 x 42	10 (80)
5130-042-028-022	42 x 28 x 22	10 (80)
5130-042-028-028	42 x 28 x 28	10 (80)
5130-042-028-035	42 x 28 x 35	10 (80)
5130-042-028-042	42 x 28 x 42	10 (80)
5130-042-035-028	42 x 35 x 28	10 (80)
5130-042-035-035	42 x 35 x 35	10 (80)
5130-042-035-042	42 x 35 x 42	10 (80)
5130-042-042-022	42 x 42 x 22	10 (80)
5130-042-042-028	42 x 42 x 28	10 (80)
5130-042-042-035	42 x 42 x 35	10 (80)
5130-042-054-042	42 x 54 x 42	10 (80)
5130-054-015-054	54 x 15 x 54	1 (10)
5130-054-018-054	54 x 18 x 54	1 (10)
5130-054-022-042	54 x 22 x 42	1 (10)
5130-054-022-054	54 x 22 x 54	1 (10)
5130-054-028-042	54 x 28 x 42	1 (10)
5130-054-028-054	54 x 28 x 54	1 (10)
5130-054-035-035	54 x 35 x 35	1 (10)
5130-054-035-042	54 x 35 x 42	1 (10)
5130-054-035-054	54 x 35 x 54	1 (10)
5130-054-042-042	54 x 42 x 42	1 (10)
5130-054-042-054	54 x 42 x 54	1 (10)
5130-054-054-015	54 x 54 x 15	1 (10)
5130-054-054-022	54 x 54 x 22	1 (10)
5130-054-054-028	54 x 54 x 28	1 (10)
5130-054-054-035	54 x 54 x 35	1 (10)
5130-054-054-042	54 x 54 x 42	1 (10)
5130-067-028-067	67 x 28 x 67	1 (20)
5130-067-035-067	67 x 35 x 67	1 (20)
5130-067-042-067	67 x 42 x 67	1 (18)
5130-067-054-067	67 x 54 x 67	1 (15)
5130-076-035-076	76 x 35 x 76	1 (13)
5130-076-042-076	76 x 42 x 76	1 (15)
5130-076-054-076	76 x 54 x 76	1 (12)
5130-076-064-076	76 x 64 x 76	1 (10)

5240 Reducing Coupling C x C



SYMBOL	ROZMIAR	ILOŚĆ W TOREBCE/KARTONIE
5240-010-008	10 x 8	50 (500)
5240-012-008	12 x 8	50 (500)
5240-012-010	12 x 10	50 (500)
5240-014-010	14 x 10	25 (250)
5240-014-012	14 x 12	25 (250)
5240-015-010	15 x 10	25 (250)
5240-015-012	15 x 12	25 (250)
5240-016-012	16 x 12	25 (250)
5240-016-014	16 x 14	25 (250)
5240-018-010	18 x 10	25 (250)
5240-018-012	18 x 12	25 (250)
5240-018-015	18 x 15	25 (250)
5240-022-012	22 x 12	25 (250)
5240-022-015	22 x 15	25 (250)
5240-022-018	22 x 18	25 (250)
5240-028-012	28 x 12	10 (100)
5240-028-015	28 x 15	10 (100)
5240-028-018	28 x 18	10 (100)
5240-028-022	28 x 22	10 (100)
5240-035-015	35 x 15	10 (100)
5240-035-018	35 x 18	10 (100)
5240-035-022	35 x 22	10 (100)
5240-035-028	35 x 28	10 (100)
5240-042-015	42 x 15	10 (80)
5240-042-018	42 x 18	10 (80)
5240-042-022	42 x 22	10 (80)
5240-042-028	42 x 28	10 (80)
5240-042-035	42 x 35	10 (80)
5240-054-022	54 x 22	1 (10)
5240-054-028	54 x 28	1 (10)
5240-054-035	54 x 35	1 (10)
5240-054-042	54 x 42	1 (10)
5240-067-054	67 x 54	1 (40)
5240-076-054	76 x 54	1 (40)
5240-076-064	76 x 64	1 (40)

5243 Fitting Reducer Ftg x C



SYMBOL	ROZMIAR	ILOŚĆ W TOREBCE/KARTONIE
5243-010-008	10 x 8	50 (500)
5243-012-008	12 x 8	50 (500)
5243-012-010	12 x 10	50 (500)
5243-014-012	14 x 12	25 (250)
5243-015-008	15 x 8	25 (250)
5243-015-010	15 x 10	25 (250)
5243-015-012	15 x 12	25 (250)
5243-016-014	16 x 14	25 (250)
5243-018-010	18 x 10	25 (250)
5243-018-012	18 x 12	25 (250)
5243-018-015	18 x 15	25 (250)
5243-022-010	22 x 10	25 (250)
5243-022-012	22 x 12	25 (250)
5243-022-015	22 x 15	25 (250)
5243-022-018	22 x 18	25 (250)
5243-028-010	28 x 10	10 (100)
5243-028-012	28 x 12	10 (100)
5243-028-015	28 x 15	10 (100)
5243-028-018	28 x 18	10 (100)
5243-028-022	28 x 22	10 (100)
5243-035-015	35 x 15	10 (100)
5243-035-018	35 x 18	10 (100)
5243-035-022	35 x 22	10 (100)
5243-035-028	35 x 28	10 (100)
5243-042-015	42 x 15	10 (80)
5243-042-018	42 x 18	10 (80)
5243-042-022	42 x 22	10 (80)
5243-042-028	42 x 28	10 (80)
5243-042-035	42 x 35	10 (80)
5243-054-015	54 x 15	1 (10)
5243-054-018	54 x 18	1 (10)
5243-054-022	54 x 22	1 (10)
5243-054-028	54 x 28	1 (10)
5243-054-035	54 x 35	1 (10)
5243-054-042	54 x 42	1 (10)
5243-067-042	67 x 42	1 (40)
5243-067-054	67 x 54	1 (40)
5243-076-035	76 x 35	1 (40)
5243-076-042	76 x 42	1 (40)
5243-076-054	76 x 54	1 (40)
5243-076-067	76 x 67	1 (40)

Metric Copper Pressure Fittings

5270 Coupling C x C



FIGURE NO.	SIZE	QUANTITY BAG/CARTON
5270-008	8	50 (500)
5270-010	10	50 (500)
5270-012	12	50 (500)
5270-014	14	25 (250)
5270-015	15	25 (1000)
5270-016	16	25 (250)
5270-018	18	25 (250)
5270-022	22	10 (250)
5270-028	28	10 (250)
5270-035	35	10 (100)
5270-042	42	10 (80)
5270-054	54	1 (10)
5270-067	67	1 (36)
5270-076	76	1 (27)
5270-108	108	1 (6)

5301 Cap C



FIGURE NO.	SIZE	QUANTITY BAG/CARTON
5301-008	8	50 (500)
5301-010	10	50 (500)
5301-012	12	50 (500)
5301-015	15	25 (250)
5301-018	18	25 (250)
5301-022	22	10 (250)
5301-028	28	10 (250)
5301-035	35	10 (100)
5301-042	42	10 (80)
5301-054	54	1 (10)
5301-067	67	1 (55)
5301-076	76	1 (40)

5359 G Tap Connector Flat Joint C x F



FIGURE NO.	SIZE	QUANTITY BAG/CARTON
5359-015-1/2	15 x 1/2	250
5359-015-3/4	15 x 3/4	250
5359-018-1/2	18 x 1/2	250
5359-018-3/4	18 x 3/4	250
5359-022-3/4	22 x 3/4	250

Note

Accessories

59110 Wheel Pipe Cutter



FIGURE NO.	SIZE	QUANTITY BAG/CARTON
59110	up to 35mm	1

595 Fitting Brush



FIGURE NO.	SIZE	QUANTITY BAG/CARTON
595-015	15	10 (180)
595-018	18	10 (180)
595-022	22	10 (180)
595-028	28	10 (180)

598 Flux C65



FIGURE NO.	SIZE	QUANTITY BAG/CARTON
598-125	125g	1 (20)
598-500	500g	1 (24)

593 Soldering Paste LF No. 3



FIGURE NO.	SIZE	QUANTITY BAG/CARTON
593-100	100g	60
593-250	250g	20

596 Solid Solder



FIGURE NO.	SIZE	QUANTITY BAG/CARTON
596-020	2mm/250 g	50
596-025	2,5mm/250 g	50
596-030	3mm/250 g	50

599 Flux Gel C66



FIGURE NO.	SIZE	QUANTITY BAG/CARTON
599-125	125 g	1 (20)
599-500	500 g	1 (20)

594 Brazing Paste HS



FIGURE NO.	SIZE	QUANTITY BAG/CARTON
594-100	100g	20

597 Brazing Alloy



FIGURE NO.	SIZE	QUANTITY BAG/CARTON
597-100	1 kg	1

Accessories

5926 Single Plastic Clamp with Extension Dowel



FIGURE NO.	SIZE	QUANTITY BAG/CARTON
5926-008	8	100 (1800)
5926-010	10	100 (1800)
5926-012	12	100 (1800)
5926-015	15	100 (1800)
5926-018	18	50 (900)
5926-022	22	50 (900)
5926-028	28	50 (900)

5928 Single Plastic Clamp with Double Threaded Screw



FIGURE NO.	SIZE	QUANTITY BAG/CARTON
5928-008	8	100 (1800)
5928-010	10	100 (1800)
5928-012	12	100 (1800)
5928-015	15	100 (1800)
5928-018	18	50 (900)
5928-022	22	50 (900)
5928-028	28	50 (900)

591-Cu Assembling Plate with Drop Ear (2) Elbows C x F



FIGURE NO.	SIZE	QUANTITY BAG/CARTON
591-Cu	15 x 1/2	1

630 B Assembling Plate



FIGURE NO.	SIZE	QUANTITY BAG/CARTON
630 B	15 x 1/2	10

Distance between holes 115mm.

5927 Dual Plastic Clamp with Extension Dowel



FIGURE NO.	SIZE	QUANTITY BAG/CARTON
5927-008	8	100 (1800)
5927-010	10	100 (1800)
5927-012	12	100 (1800)
5927-015	15	100 (1800)
5927-018	18	50 (900)
5927-022	22	50 (900)
5927-028	28	50 (900)

5929 Dual Plastic Clamp with Double Threaded Screw



FIGURE NO.	SIZE	QUANTITY BAG/CARTON
5929-008	8	100 (1800)
5929-010	10	100 (1800)
5929-012	12	100 (1800)
5929-015	15	100 (1800)
5929-018	18	50 (900)
5929-022	22	50 (900)
5929-028	28	50 (900)

59001 Non Metallic Cleaning Fibre



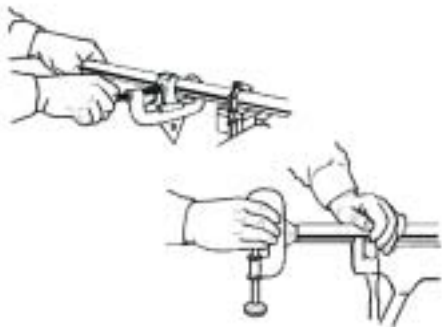
FIGURE NO.	SIZE	QUANTITY BAG/CARTON
59001	150 x 55	10

The Fine Art of Soldering

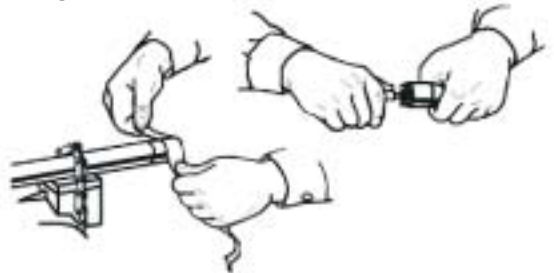
When adjoining surfaces of copper and copper alloys meet under proper conditions of cleanliness and temperature, solder will make a perfect adhesion. The strength of the joint is equal to or even greater than the strength of the tube alone. Surface tension seals the joint. Capillary attraction draws solder in, around, and all about the joint. It's easy to learn to make a perfect solder joint when you use NIBCO Fittings.

WITH LEAD-FREE SOLDER AND INTERMEDIATELY CORROSIVE FLUX

1. Cut tube end square, ream, burr and size



2. Use sand cloth or steel wire brush to clean tube and cup to a bright metal finish



3. Apply solder flux to outside of tube and inside of cup of fitting carefully so that surfaces to be joined are completely covered. **Use flux sparingly.**



4. Apply flame to the fitting to heat tube and solder cup of fitting until solder melts when placed at joint of tube and fitting.



5. Remove flame and feed solder into the joint at one or two points until a ring of solder appears at the end of the fitting. The correct amount of solder is approximately equal to 1 1/2 the diameter of the fitting.



6. Remove excess solder with a small brush or wiping cloth while the solder is plastic.





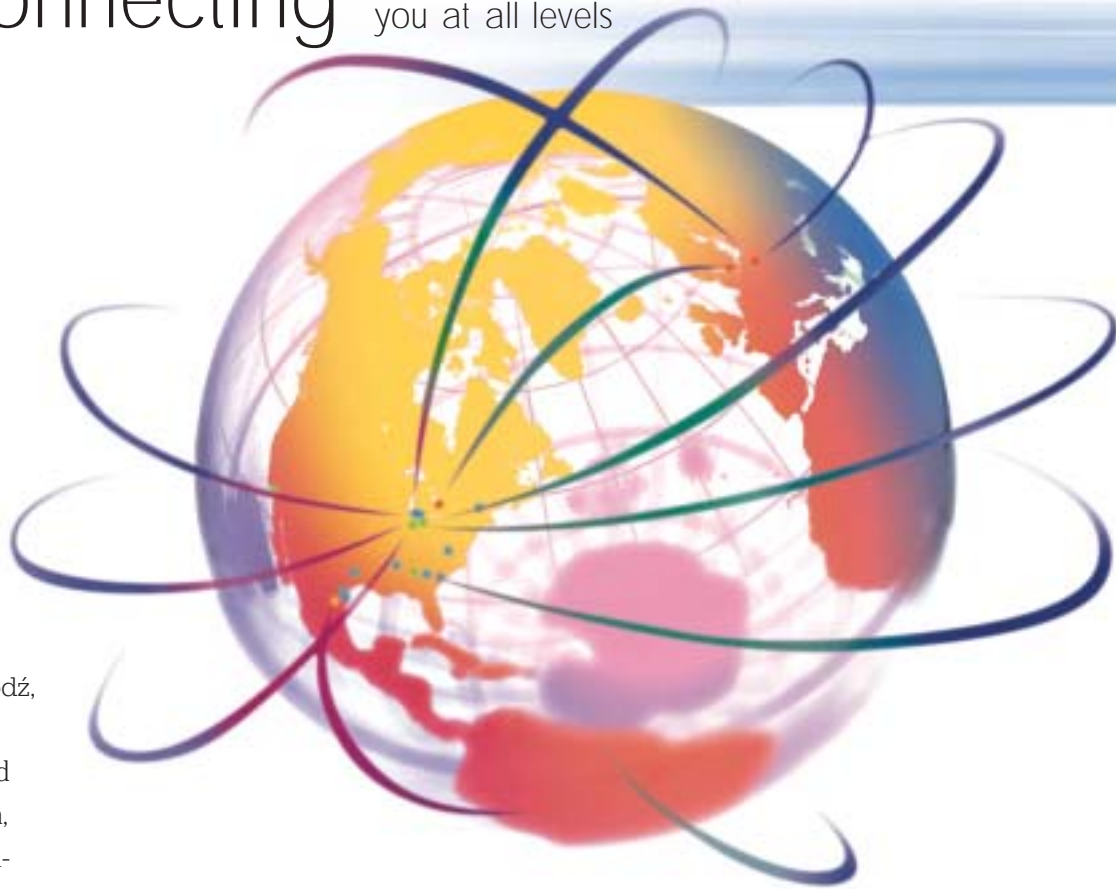
50 YEAR GUARANTEE FOR NIBCO PRODUCTS

PVC-C PIPES AND FITTINGS (chlorinated polyvinyl chloride)	PVC-U PIPES AND FITTINGS (polyvinyl chloride)	WROT COPPER FITTINGS DIAMETERS 8 - 108 mm
TECHNICAL PROPERTIES		
<ul style="list-style-type: none"> hot and cold water systems with diameters from 1/2" to 2" max. temp. 70° C (break-down temp. 95° C) working pressure 1,1Mpa 	<ul style="list-style-type: none"> cold water systems with diameters from 1/2" to 4" temp. 45°C, drinking water to 20° C working pressure 4,14 Mpa 	<ul style="list-style-type: none"> phosphorus deoxidized, Cu (including Ag) > 99,90%, P from 0,015 to 0.040% Cu DHP acc. ISO 1190-1 UNS C12200 <p>Working parameters:</p> <ul style="list-style-type: none"> 1,6 Mpa (8mm - 28mm) at 110° C 1 Mpa (35mm - 108mm) at 110° C max. working temp. 204° C
APPLICATIONS		
<ul style="list-style-type: none"> cold water systems from PVC-C and PVC-U hot water systems from PVC-C industrial systems for different types of chemicals from PVC-C and PVC-U (after consulting the producer) air conditioning systems 		<ul style="list-style-type: none"> hot and cold water systems central heating systems gas installations liquid and medical gas systems air conditioning and cooling systems compressed air systems oil systems

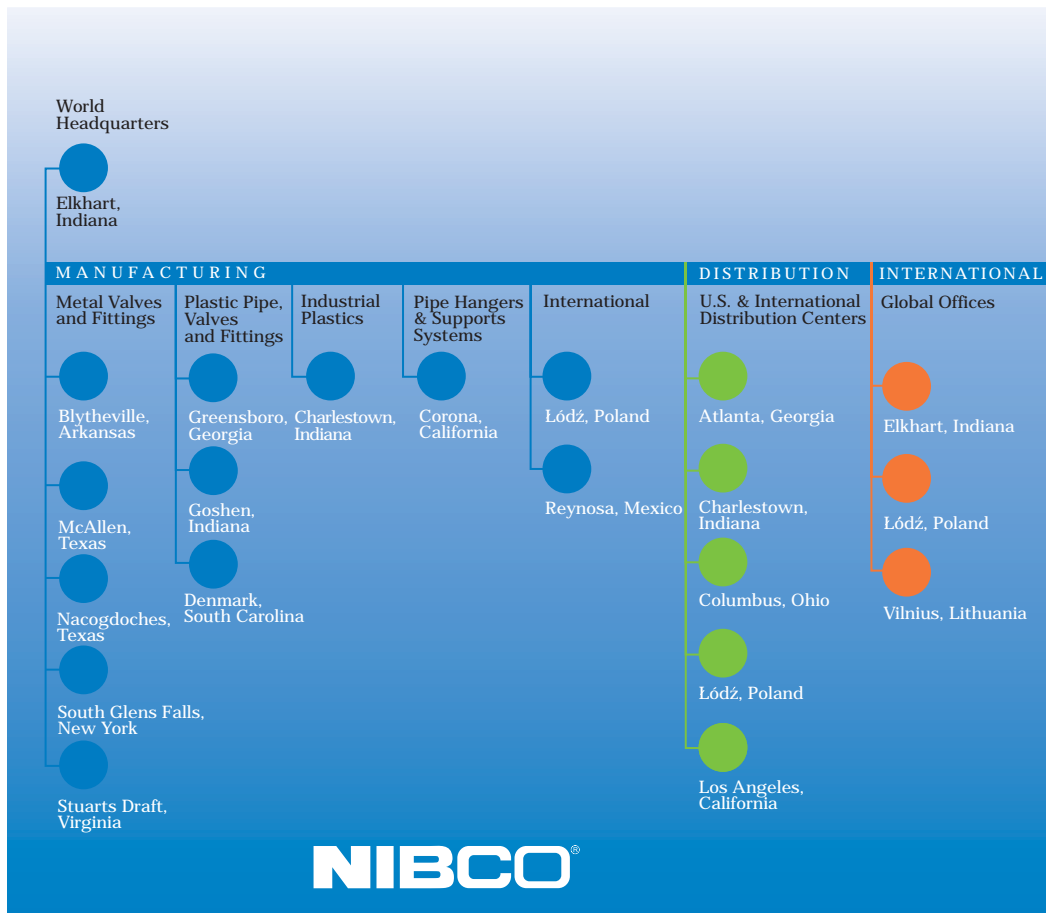
GUARANTEE CONDITIONS

1. Nibco sp.z o.o. guarantees that plumbing pipes from PVC-C / PVC-U and fittings from copper, PVC-C and PVC-U are free from production and material defects.
2. The guarantee is valid for :
50 yaers from the purchase date of NIBCO products
3. The guarantee includes only complaints regarding the defects of pipes and fittings bought by the client Nibco sp.z o.o. sales chain.
4. Nibco sp.z o.o. guarantees the replacement of the faulty product on the house within 30 days from receiving the complaint or within the time agreed with the client.
5. The guarantee will be accepted only in case of presenting the purchase proof in the form of an invoice or cash register printout, which are not dubious that the product was bought in the Nibco Sp. z o.o. sales chain
6. The guarantee is limited to repair cost or product replacement.
7. The guarantee becomes void in the following cases:
 - the pipes and fittings were not installed in accordance with the instruction
 - the product was not stored nor used properly
 - pipes and fittings were not used in accordance with their application (see "application")
 - damage was "force-majeur" type (lightning, building disaster, fire, flood, etc)

globally connecting you at all levels



It's a new age of business, and a new way at NIBCO. From Elkhart, Indiana to Łódź, Poland, and points beyond, our company has integrated manufacturing, distribution, and networked communications to provide a seamless source of information and service, 24 hours a day, 7 days a week. But this integration hasn't happened overnight. It's been part of a long-term strategic process that has pushed us to reconsider every aspect of our business. The result? We're a vertically integrated manufacturer with the products and systems in place to deliver low cost and high quality. NIBCO's products are manufactured under a Quality Management System conforming to the current revision of ISO-9002 International Standards. We know the flow control industry is only going to get more demanding, and we are more than ready. We will continue to lead. That's what NIBCO is all about.



NIBCO®

FITTINGS



Wrot and cast copper pressure fittings • Wrot and cast copper drainage fittings • Wrot Copper PEXlink® fittings • Cast copper alloy flared fittings • Cast copper alloy flanges • ABS and PVC-U DWV fittings • Schedule 40 PVC-U pressure fittings • PVC-C CTS fittings • PVC-C CTS-to-metal transition fittings • Schedule 80 PVC-U and PVC-C systems • PVC-C metric piping systems.

VALVES & ACTUATION

Pressurerated bronze, iron and alloy-iron gate, globe and check valves • Pressurerated bronze ball valves • Boiler specialty valves • Commercial and industrial butterfly valves • Circuit balancing valves • Carbon and stainless steel ball valves • ANSI flanged steel ball valves • Pneumatic and electric actuators and controls • Grooved ball and butterfly valves • High Performance Butterfly Valves • UL/FM fire protection valves • Low-pressure gate, globe, check and ball valves • Bronze specialty valves • Frostproof sillcocks • MSS specification valves • PVC-U ball valves • PVC-C CTS ball valves.



CHEMTROL®

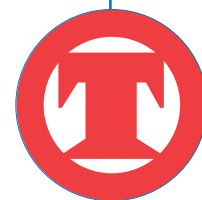


Thermoplastic pipe, valves and fittings in PVC-U, Corzan® PVC-C, polypropylene and PVDF Kynar® • Chem-Aire® thermoplastic compressed air piping systems • Pneumatic and electric actuation systems.

Corzan® is a registered trademark of Noveon Inc.
Kynar® is a registered trademark of ATOFINA Chemicals, Inc.

TOLCO™

NIBCO now offers complete support with its newest addition of TOLCO™ brand piping solutions including: Pipe Attachments • Structural Attachments • Pipe Rollers • Threaded Products and Accessories • Seismic Components • Vibration Isolation • Standard and Speciality Supports • TOL-Strut™ Channel and Components.



NIBCO®
AHEAD OF THE FLOW™

NIBCO INC.
WORLD HEADQUARTERS
ELKHART, INDIANA USA
WEB: www.nibco.com

INTERNATIONAL OFFICE
PHONE: +1/574.295.3221
FAX: +1/574.295.3455

NIBCO Sp. z o.o.
ul. P. K. P. 6, 92-402 ŁÓDŹ
POLAND

TEL: +48(42) 677 56 01
FAX: +48(42) 677 56 10
www.nibco.com.pl
e-mail: nibco@nibco.com.pl

DYSTRYBUTOR: